

The Goat

5kW/4.8kWh



T: 020 8941 1199 E: INFO@NXTGENBPS.COM



The **NXTGENbps Goat** delivers dependable, zero-emission power in a compact, portable form. Perfect for film, TV production, events, and remote setups. It provides clean, silent energy for lighting, DIT, catering, and production equipment or wherever reliable off-grid power is needed.

FEATURES AT A GLANCE

- Portable off-grid power ideal for film, broadcast, and live event use
- Expandable with Billy Goat units up to 139 kWh total capacity
- Inputs Solar, DC, AC and EV (Type 2) charging
- Pure sine wave inverter protects sensitive equipment
- Compact, robust design with optional protective trolley
- Zero emissions and silent operation

PRODUCT DETAILS



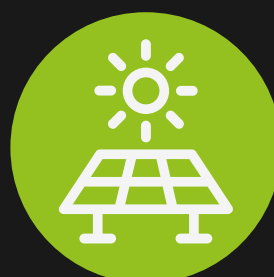
5 kW / 4.8kWh

4.8kWh expandable up to 139kWh with the Billy Goat 9.6kW Expansion Pack



79kg Weight

79 KG and features a robust cage option, ensuring portability in any location.



Solar Charging

The Goat supports solar charging, capturing sustainable power even while in use



Sustainable Design

LiFeP04 -Battery technology which can be recycled into other electronic devices



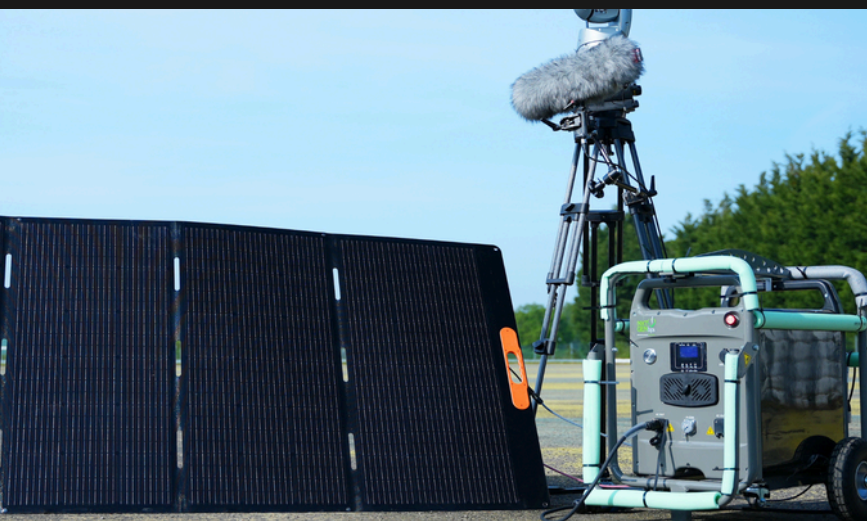
Silent Operation

Operates almost silently, ideal for sound-sensitive locations



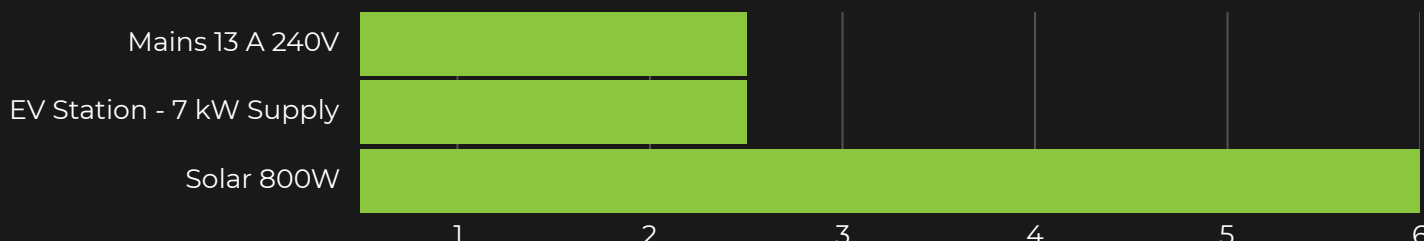
Zero Emissions

Emission-free power for carbon-neutral production without sacrificing performance



CHARGING TIMES

● Charging Time in Hours



*Charging times may vary based on conditions



TECHNICAL DATA

NXTGENbps Goat & Billy Goat

	NXTGENbps Goat	NXTGENbps Billy Goat Expansion Unit
Weight	Excluding Trolley: 79kg Including Trolley: 100kg	Excluding Trolley: 99kg Including Trolley: 119kg
Dimensions (L x W x H)	Excluding Trolley: 560mm x 400mm x 660mm Including Trolley: 860mm x 500mm x 820mm	Excluding Trolley: 560mm x 400mm x 660mm Including Trolley: 860mm x 500mm x 820mm
Power Output	5 kW Continuous, 7.5 kW Peak (10secs)	3.5 kW continuous (when connected to a Goat)
Battery Capacity	4.8 kWh	9.6 kWh
Charging Time (Full Charge, 5%–95%, above 0°C)	Mains 13A (240V): 2.5 hrs EV Station (7kW): 2.5 hrs Solar (60-140V): 6-12 hrs (800w panel)	Mains 13A (240V): 6 hrs EV Station (7kW): 6 hrs Solar (60-140V): 12-24 hrs (800w panel)
Output (Discharging)	1 x CEE16A 240V 1 x CEE32A 240V 1 x USB-C	Expansion Connection
Input (Charging)	1 x 240V AC 1 x EV 1 x PV 1 x DC (Billy Goat expansion)	N/A
Expansion	Expandable up to 139 kWh with Billy Goat	N/A
Battery Type	LiFePO4	LiFePO4
Cooling Principle	Air Cooled	Air Cooled
Operating Temp Range	-20°C to +60°C	-20°C to +60°C
Protection Class	IP67	IP67
Lifecycles	6,000	6,000
Warranty	Battery: 5 years Inverter: 2 years	Battery: 5 years Inverter: 2 years



NXTGENbps PURE GREEN ENERGY

Expandable up to a maximum of 14 units (139 kWh) with the Billy Goat 9.6kWh expansion pack, the Goat provides exceptional flexibility. Its built-in pure sine inverter safeguards sensitive equipment, and it accepts multiple power sources, including Solar Capture, DC, AC inputs, and an EV charger (Type 2), ensuring clean and reliable energy wherever you need it.